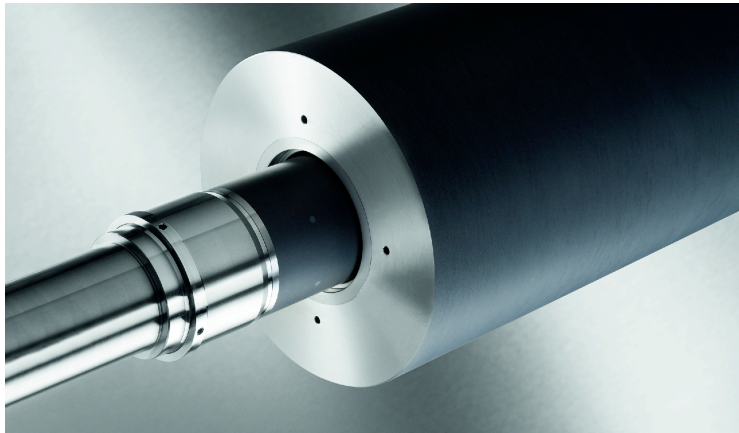




PRODUCT INFORMATION



Inometa is offering a wide range of state of the art format adapter systems for different demands. Our product range is covering adapters for all needs. Extremely smooth running attributes the lowest run-outs with highest stiffness and optimal superb absorption of vibrations elevates the extremely innovative INOMETA Format Adapter Systems product line to a new superior level of today's industry standards in adapter technology. The excellent know-how that Inometa has established in adapter technology is based on our deep knowledge of carbon-fiber technology combined with our expertise in flexographic printing and customer oriented engineering. Carbon fiber mandrel shells allow the adapters to be designed for high performance and fast running presses. They offer smooth running, lowest run-outs, highest stiffness and optimal absorption.

INOMETA AKL Flexo Systems LLC
2900 North Roemer Appleton, WI 54911
T +1 920.738.6828
F +1 920.738.6833
ddietrich@inometa-akl.com

CARBON FIBER ADAPTERS

Hydraulic Plate Mounting Sleeve Adapter

- Highest run-out attributes at highest stiffness
- Optimized bouncing and vibration dampening
- Weight optimized
- Conductive according to ATEX 95
- As system supplier Inometa also manufactures the clamping mandrels

Pneumatic Plate Mounting Sleeve Adapter

- Bridge construction for improved stiffness
- Highest smooth running attributes
- Conductive according to ATEX 95
- Extremely resistant to harmonics and absorbing vibrations
- Air supply via the cylinder, the press or external supply
- Wall thickness up to 150 mm
- As system supplier Inometa also manufactures the clamping mandrels

Modular System

Our adapters are designed to make your job of handling and maintenance. Due to our modular design which allows for most parts to be individually replaced in the event that any are destroyed, our adapters are built to last.